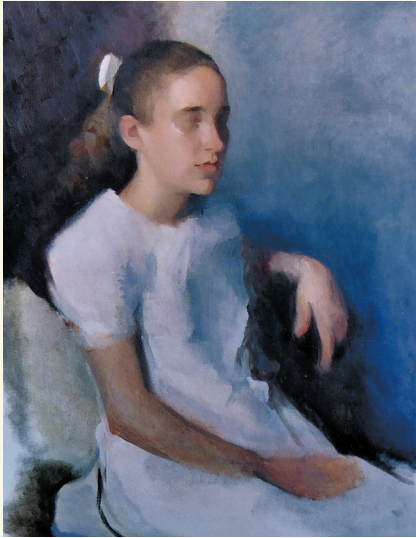
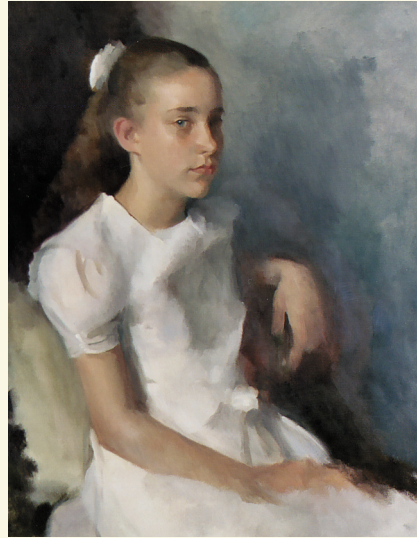


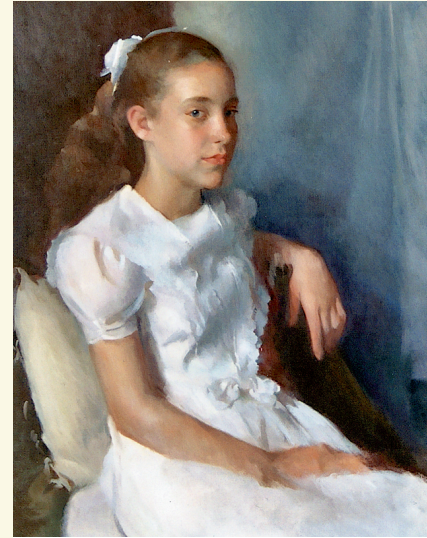
DEMONSTRATION

PORTRAIT OF EMILY

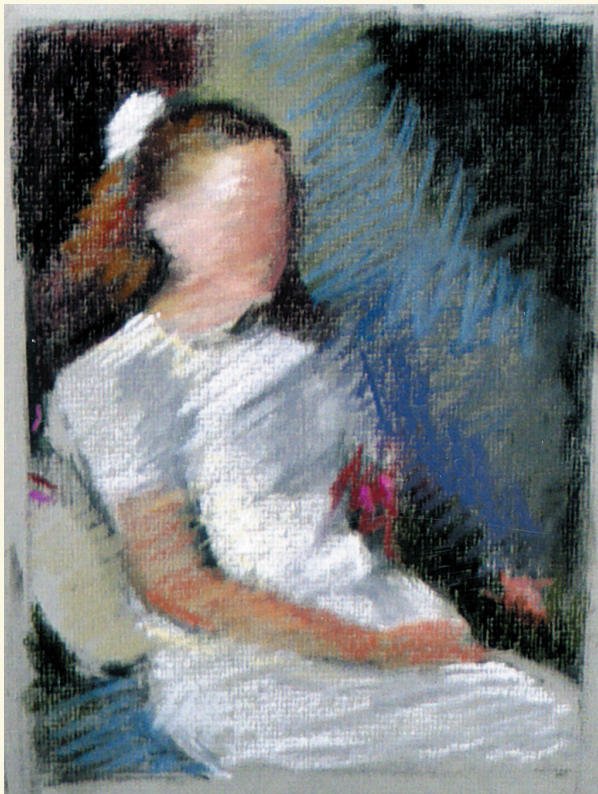
Step 1 With the initial lay-in, Minifie placed the head and figure on the canvas. She established the mass of the head, the value range, and the color relationships between flesh tones, background, and the white dress.



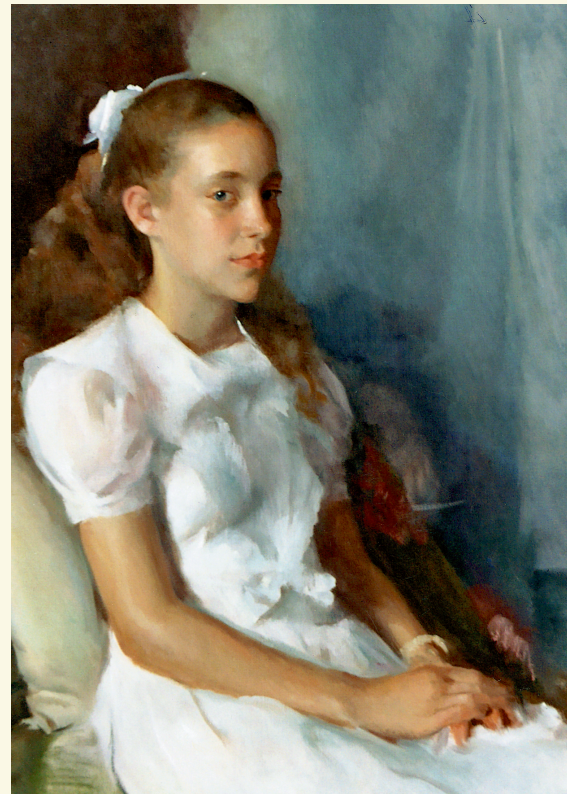
Step 2 Next, the artist developed the forms, keeping the more readable edges sharp and the lost areas less distinct.



Step 3 Minifie then developed the color and warm/cool relationships and began to add detail to the bow and dress.



Step 4 At this point the artist decided she wasn't comfortable with the raised hand; it didn't seem to work with the flow of the body. She then did a small pastel sketch to try some new ideas.



Step 5 In the next session with the model, Minifie changed the pose so the hand was in the model's lap and her hair was draped over her shoulder.